



HEART OF BUXTED

Buxted Parish Council

31ST MAY 2022

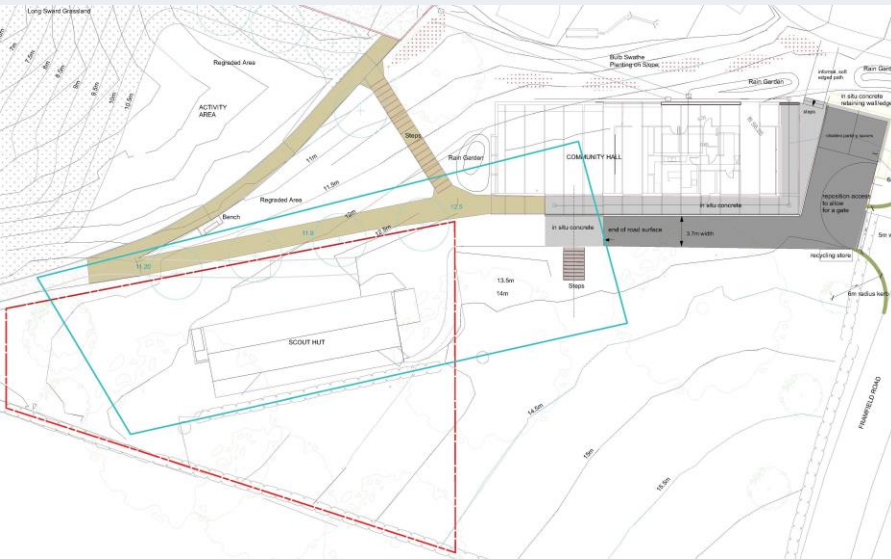
WHAT HAS CHANGED



FRAMEFIELD ROAD, BUXTED.

- A long history
- Planning permission obtained for Reading Room site
- The Reading Room demise-Survey of Reading Room
- Buxted Community Village Hall Trust
- Parish Council to take a more active role?
- Lease

WHAT HAS CHANGED



- A long history
- Planning permission obtained for Reading Room site
- The Reading Room demise-Survey of Reading Room
- Buxted Community Village Hall Trust
- Lease



WHAT'S ALREADY BEEN ACHIEVED?

- Planning permission
- Groundworks-started
- Regeneration of the surrounding space
- Parking improvements
- Play equipment
- Further landscaping

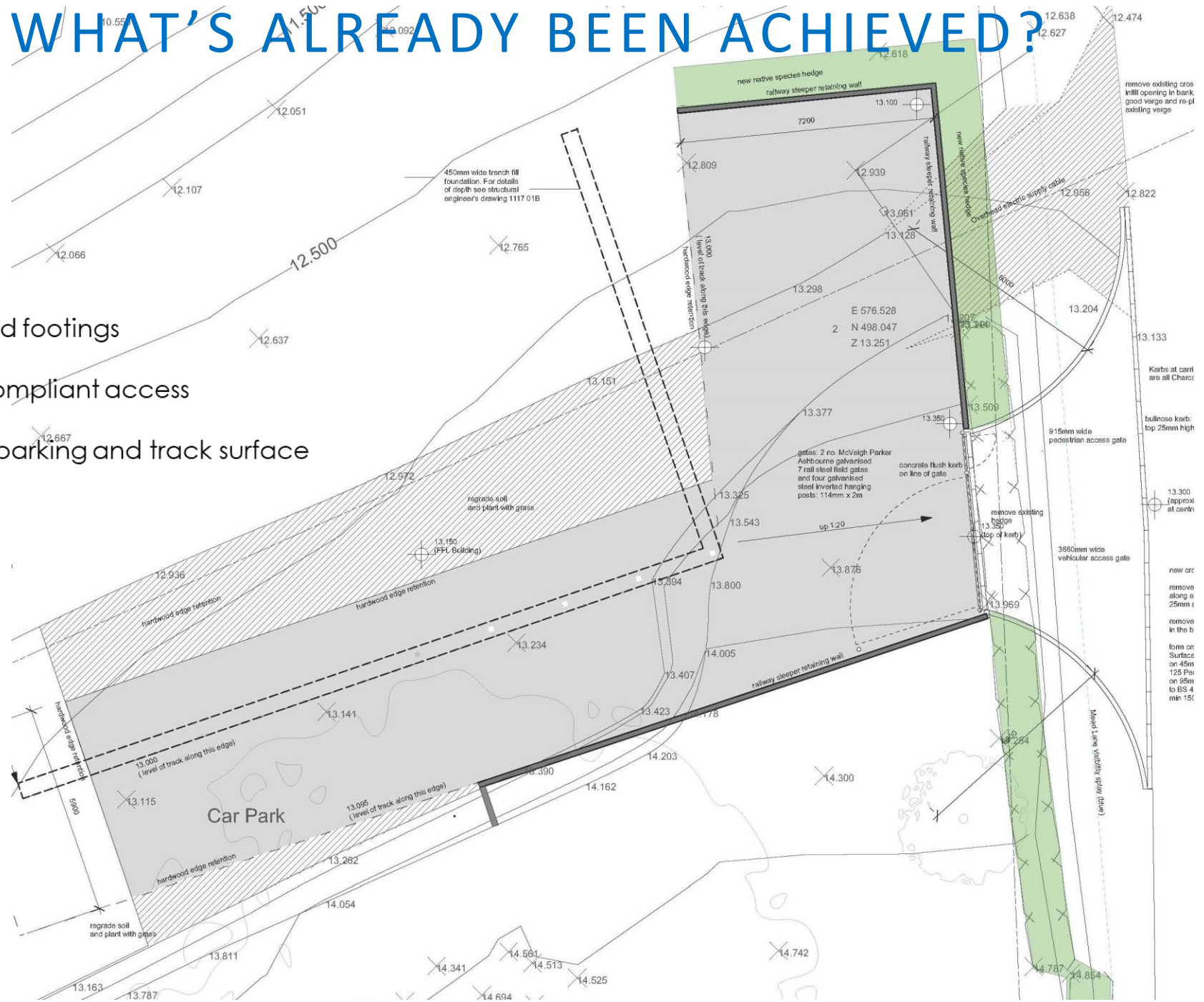


WHAT'S ALREADY BEEN ACHIEVED?

Dotted lines are buried footings

Splayed, Highways compliant access

Grey area improved parking and track surface



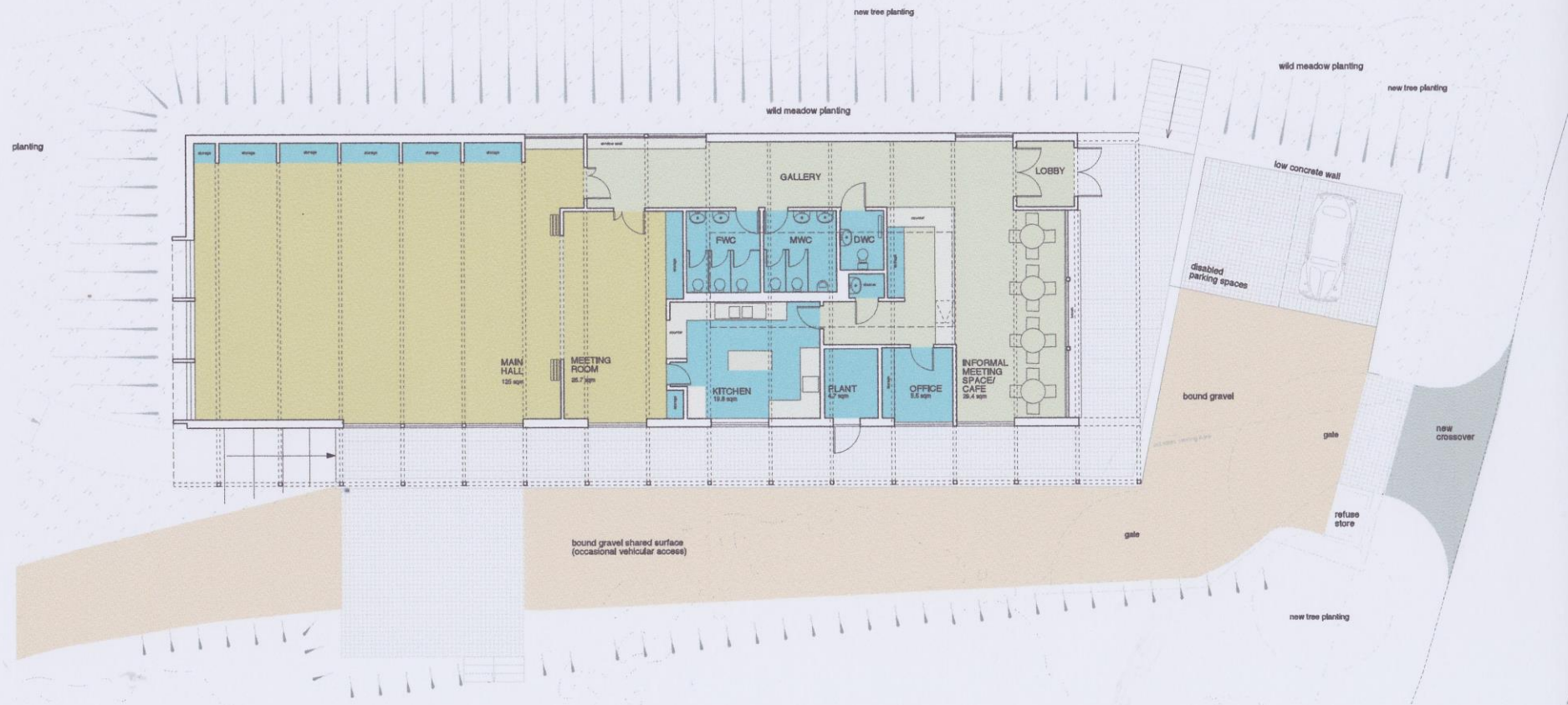


WHAT'S ALREADY BEEN ACHIEVED ?

- Planning permission
- Groundworks-started
- Regeneration of the surrounding space
- Parking improvements
- Play equipment
- Further landscaping



WHAT'S ALREADY BEEN ACHIEVED?



Buxted Community Hall
Ground floor plan
scale 1:100 at A2 March 2014

204/003

Barker Shorten Architects LLP
23-25 Penn Street, London, N1 5DL
20 St Leonards Place, Eastbourne, East Sussex, BN20 8ND

studio@barkershorten.com
+44 (0)20 7238 1071
+44 (0)1323 640079



WHY DO IT?

- Not a building - a centre to support and encourage community social activities – a **'Heart of Buxted'**

“A village hall is the most valuable asset any local community can have, as it provides social, educational and recreational activities for all ages, stimulates community engagement and enhances the quality of life for people who may be living in isolation. This is a common problem experienced by many in a rural setting such as the Parish of Buxted”

.....Buxted Community Hall Trust – Business Plan

Sheila Bartholomew, G. Claydon, M. Dopson, C. Hitchins

Our forebears placed great store by Village Halls and left us this valuable heritage which we would do well to continue !



WHY DO IT?

- Clubs and societies – support from users

EXISTING USERS

The User Groups who currently utilise the below together with their usage pattern.

- Art Group.pdf
- Buxted Players.pdf
- Buxted Players.pdf.log
- BuxtedWI.pdf
- Church.pdf
- Colonel Campbell.doc
- Help Aged.pdf
- Lunch Club.pdf
- Next Step.pdf
- Orchestra.pdf

User group	No. of sessions		
	Sessions	Completed	Cancelled
Buxted Art Club	36		
Buxted Parish Council	30		
Buxted Players (Drama society)	28		
Buxted WI	30		(11 cancelled)
Charity Events	8		
Horticultural Society	8		
Ionides Trust	5		
Karate	0	30	No longer active
Party Hire			
Uckfield I			
Committee			
Zumba			
TOTAL			

2.13 Would you actively participate in more village events if available

62% responded 'Yes'

2.14 Do you currently participate in any Parish interest groups / sports etc, such as WI, PC etc

31% responded 'Yes'



WHY DO IT?

- New activities / potential users

POTENTIAL USERS

In addition to the existing User Groups, the following have been identified as potential users together with their potential usage pattern.

User group	No. of sessions per annum	
	Regular	Irregular
Adult Dance Classes	20	
Adult Education Classes	10	10
Ballroom Dancing	12	
Bridge	12	
Chess	10	
Children's Dance Classes	30	
Community Café	240	
Lunch Club	12	
Next Step Youth Council	0	4
One day classes (computing, craft)	0	10
Party Hire (including weddings)	0	10
Pilates	30	
Scouts/Brownies/ Guides/Beavers	30	
Tai Chi	30	
Tea Dances	4	
Yoga	30	
Zumba	30	
TOTAL	500	34



WHY DO IT?

- New activities / potential users ...will make it self- funding ...even profitable

OPERATING COSTS

The table below shows the estimated running costs per annum which indicate the financial viability of the new hall.

Item	Estimated Costs (£K)
Outgoings:	
Business rates (may be reduced to zero for charity) (note 1)	£0
Services (Electricity, Gas, Water)	£5
Insurance (may be covered by PC)	£2
Alarm and Entry Systems (monitoring/maintenance)	£2
Caretaker (assumed zero for first few years)	£0
Cleaner Contract (assuming 360 days at £25/day) (note 2)	£9
Manager and Office Staff (assumed zero for first few years) (note 3)	£0
Total Outgoings	£ 18
Income:	
Café (assumed to initially cover costs)	£ 0
Hall Hiring (Regular) (646 sessions)	£ 21
Hall Hiring (one off) (34 sessions)	£ 3
Total Incoming	£ 24



WHY DO IT?

- New activities / potential users
- e.g. Groombridge ... a possible benchmark!

Mondays

Scottish Dance
GADS rehearsals
VivaFit Dance

Tuesdays

Music & Movement.
Just Dance Classes
Studio N Dance Classes
Pilates - Club Room pm
VivaFit Dance
Hall Committee

Wednesdays

VivaFit Seniors Dance
Pilates - Club Room
Chicago Bridge (Afternoons)

Thursdays

Tai Chi
History Group
Groombridge Horticultural Society
Women's Institute
Whist (bowls Club)

Fridays

Patchwork
Beavers, Cubs & Scouts

Weekends

Community Café

Herf Gur
Children's Parties
Village Events
St Puis Mtg
SE Raptors

Groombridge Annual Assembly 28/5/22

WHY DO IT?

- New activities / potential users
- e.g. Groombridge ... a possible benchmark!



Went Seniors Dance

St. Pius Parties

Pilates - Club Room

Village Events

Chicago Bridge (Afternoons)

St Pius Mtg

SE Raptors


Groombridge Annual Assembly 28/5/22



Groombridge Annual Assembly 28/5/22



Groombridge Annual Assembly 28/5/22



Who wouldn't
want that ?

Groombridge Annual Assembly 28/5/22



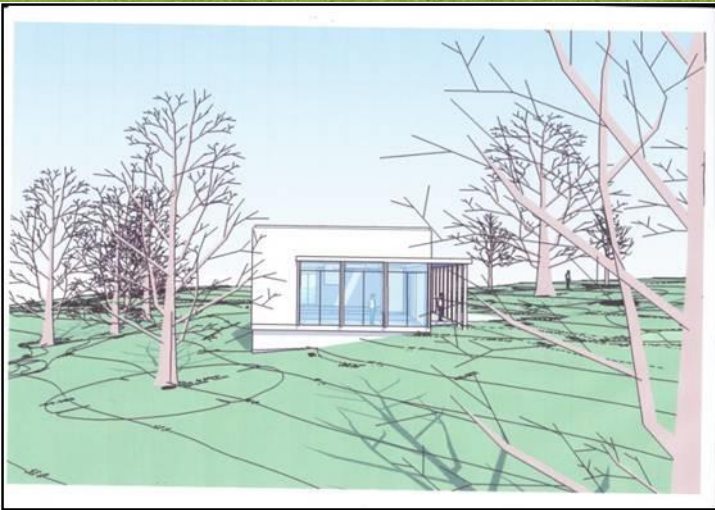
WHY DO IT?

- Alternative uses of Reading Room monieswell
 - Footpath improvements
 - Skate board parks
 - Traffic calming measures
 - Grants to other local societies
 - etc.

.....not such an enduring heritage for the village

WHAT NEEDS TO BE DONE?

- Business plans-for building and for running a self-funding centre
- Re-working of plans to an achievable and sensible budget-architecture and project management
- Altered Planning Permission
- Funding-Sale of Reading Room, CIL money etc.
- Volunteers to join Parish Council/donate skills





DISCUSSION

WE'RE ALL EARS